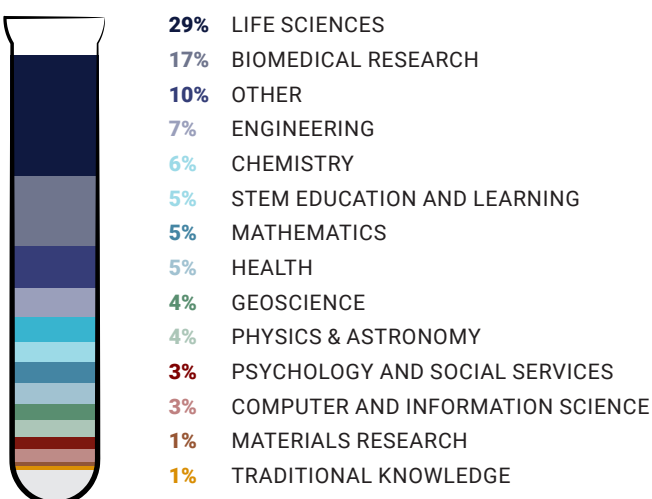




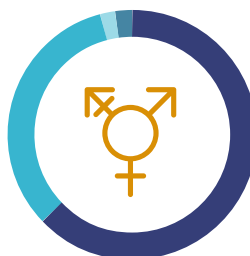
CONFERENCE BY THE NUMBERS

5,645
TOTAL ATTENDEES
*6,035 REGISTERED

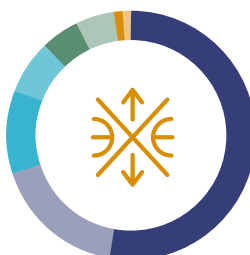
DISCIPLINES REPRESENTED



GENDER



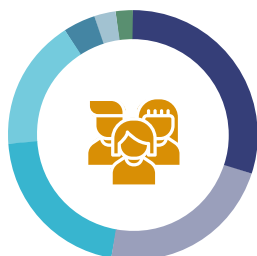
ETHNICITY



135+
NATIVE AMERICAN/INDIGENOUS AFFILIATIONS

20+
LATIN AMERICAN COUNTRIES OF ORIGIN

ATTENDEE TYPE



30% UNDERGRADUATE STUDENT
23% EXHIBITOR
21% PROFESSIONAL
17% GRADUATE STUDENT
4% OTHER
3% POSTDOC
2% POSTBAC STUDENT

STUDENT TYPE



54% UNDERGRADUATE
33% GRADUATE
5% COMMUNITY COLLEGE
4% POSTBAC
4% LEFT BLANK
< 1% POSTDOC

DOCTORAL UNIVERSITY CLASSIFICATIONS



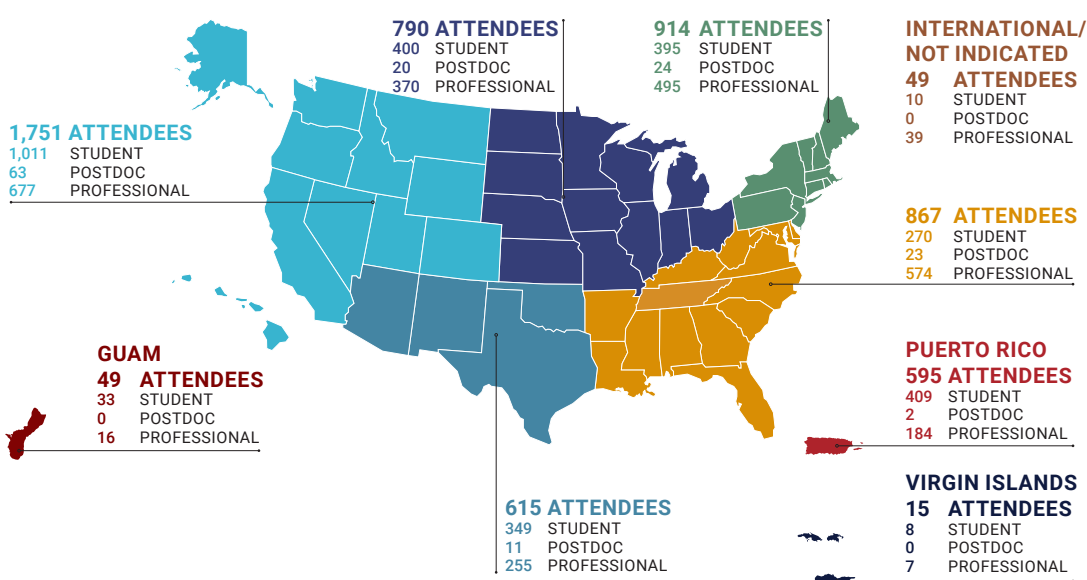
74% R1
25% R2
1% DOCTORAL/PROFESSIONAL UNIVERSITIES

MINORITY SERVING INSTITUTIONS BY DESIGNATION

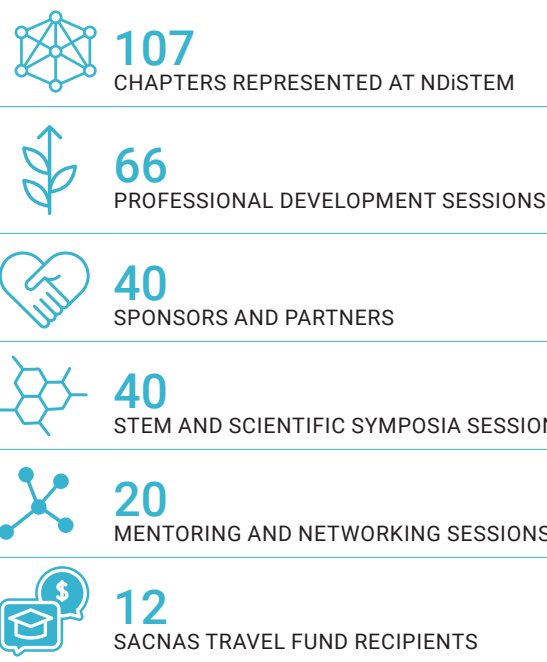
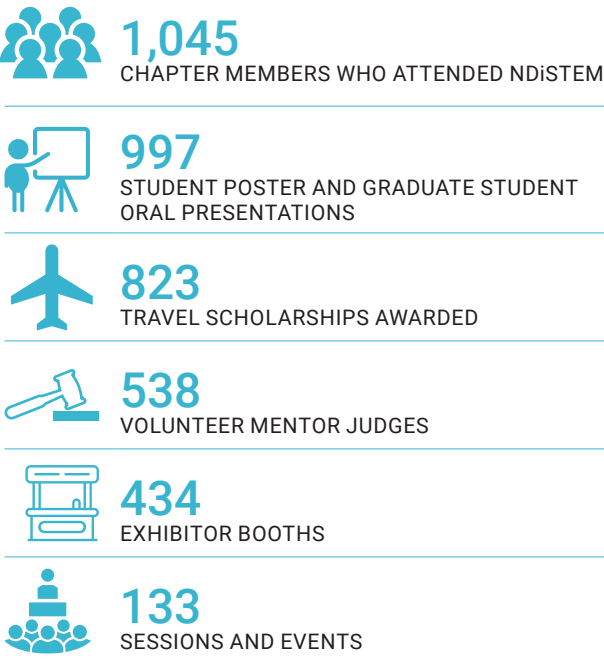


58% NON-MINORITY SERVING INSTITUTION
39% HISPANIC-SERVING INSTITUTIONS
2% HISTORICALLY BLACK COLLEGES AND UNIVERSITIES
1% TRIBAL COLLEGES AND UNIVERSITIES

GEOGRAPHIC REACH



IMPACT



SOCIAL MEDIA DURING THE MONTH OF OCTOBER 2022:



25,859
TOTAL FOLLOWERS
371,164
TOTAL IMPRESSIONS



12,150
TOTAL FOLLOWERS
79,922
TOTAL REACH

TOTAL SOCIAL MEDIA:



38,009
TOTAL FOLLOWERS



451,086
TOTAL IMPRESSIONS AND REACH

OFFICIAL CONFERENCE APP



It's been really different being here with so many people that look like me and also presenting my research...I feel like I've been [able] to step into science with my whole entire self, my whole culture, and my whole background.



FUNDING FOR THIS NDISTEM CONFERENCE WAS MADE POSSIBLE IN PART BY 1R13GM136129 AND 1R25GM130515 FROM THE NIH NATIONAL INSTITUTE OF GENERAL MEDICAL SCIENCE. THE VIEWS EXPRESSED IN WRITTEN CONFERENCE MATERIALS OR PUBLICATIONS AND BY SPEAKERS AND MODERATORS DO NOT NECESSARILY REFLECT THE OFFICIAL POLICIES OF THE DEPARTMENT OF HEALTH AND HUMAN SERVICES; NOR DOES MENTION OF TRADE NAMES, COMMERCIAL PRACTICES, OR ORGANIZATIONS IMPLY ENDORSEMENT BY THE U.S. GOVERNMENT.